

NOTICE:

THIS PLAT AS RECORDED IN ITS GRAPHIC FORM, IS THE OFFICIAL DEPICTION OF THE SUBDIVIDED LANDS DESCRIBED HEREIN AND WILL IN NO CIRCUMSTANCES BE SUPPLANTED IN AUTHORITY BY ANY OTHER GRAPHIC OR DIGITAL FORM OF THE PLAT. THERE MAY BE ADDITIONAL RESTRICTIONS THAT ARE NOT RECORDED ON THIS PLAT THAT MAY BE FOUND IN THE PUBLIC RECORDS OF THIS COUNTY.

PLAT NOTES:

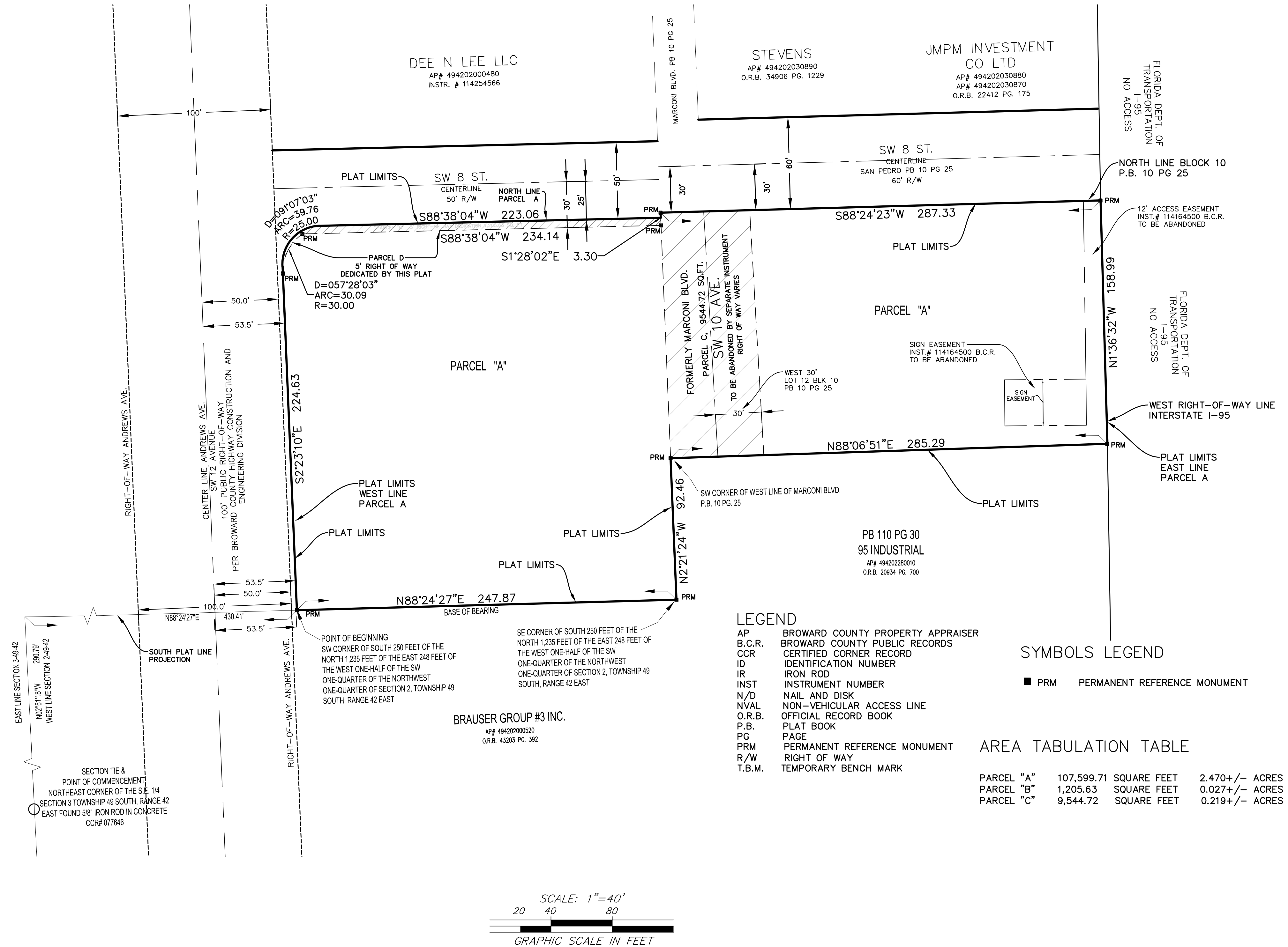
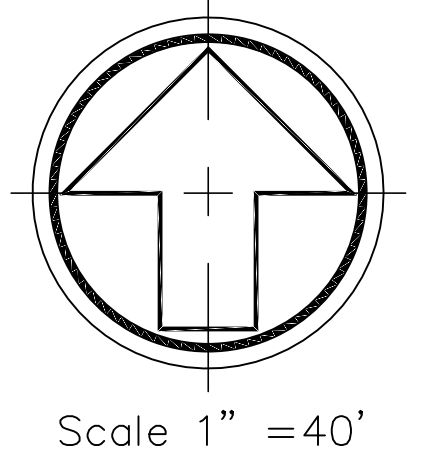
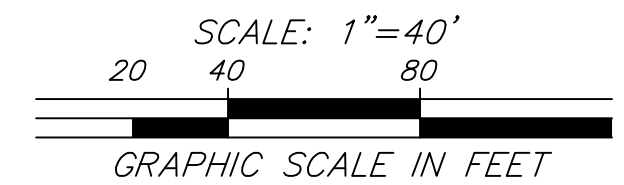
- INDICATES SET PERMANENT REFERENCE MONUMENT (P.R.M.)
- THE BEARINGS SHOWN HEREON ARE RELATIVE THE THE FLORIDA EAST STATE PLANE COORDINATE SYSTEM AS DEFINED BY GPS OBSERVATION OF GPS POINTS ESTABLISHED BY THE BROWARD COUNTY DIVISION OF ENGINEERING'S EASTERN BROWARD COUNTY HORIZONTAL GPS COUNTY NETWORK-NAD 83(90). THE BEARING BASE LINE IS THE SOUTH LINE OF THE SOUTH 250' OF THE NORTH 1,235' OF THE EAST 248' OF THE WEST 1/2 OF THE SW 1/4 OF THE NW 1/4 OF SECTION 2, TOWNSHIP 49 SOUTH RANGE 42 EAST, BEARING NORTH 88°24'27" EAST AS MEASURED.
- THE VERTICAL DATUM BASE FOR THIS MAP IS NAVD88, RELATIVE TO BROWARD COUNTY ENGINEERING DEPARTMENT BM # 722 HAVING A RECORDED ELEVATION OF 9.488'NGVD(1929) CONVERTED TO NAVD1988 PER BROWARD COUNTY'S VERTCON SOFTWARE RESULTING IN ELEVATION 7.91' NAVD88.
- THE FOLLOWING NOTE IS REQUIRED BY CHAPTER 177.091, SUBSECTION (28), FLORIDA STATUTES: PLATTED UTILITY EASEMENTS ARE ALSO EASEMENTS FOR THE CONSTRUCTION, INSTALLATION, MAINTENANCE, AND OPERATION OF CABLE TELEVISION SERVICES; PROVIDED, HOWEVER, NO SUCH CONSTRUCTION, INSTALLATION, MAINTENANCE, AND OPERATION OF CABLE TELEVISION SERVICES SHALL INTERFERE WITH THE FACILITIES AND SERVICES OF AN ELECTRIC, TELEPHONE, GAS, OR OTHER PUBLIC UTILITY. IN THE EVENT A CABLE TELEVISION COMPANY DAMAGES THE FACILITIES OF A PUBLIC UTILITY, IT SHALL BE SOLELY RESPONSIBLE FOR THE DAMAGES. THIS NOTE DOES NOT APPLY TO PRIVATE EASEMENTS GRANTED TO OR OBTAINED BY A PARTICULAR ELECTRIC, TELEPHONE, GAS, OR OTHER PUBLIC UTILITY. SUCH CONSTRUCTION, INSTALLATION, MAINTENANCE, AND OPERATION SHALL COMPLY WITH THE NATIONAL ELECTRIC SAFETY CODE, AS ADOPTED BY THE FLORIDA PUBLIC SERVICE COMMISSION.
- THIS PLAT IS RESTRICTED TO 30,000.0 SQUARE FEET OF INDUSTRIAL USE, 15,000.0 SQUARE FEET OF COMMERCIAL USE .
- THIS NOTE IS REQUIRED BY CHAPTER 5, ARTICLE IX, BROWARD COUNTY CODE OF ORDINANCES, AND MAY BE AMENDED BY APPROVAL OF THE BROWARD COUNTY BOARD OF COUNTY COMMISSIONERS. THE NOTATION AND ANY AMENDMENTS THERETO ARE SOLELY INDICATING THE APPROVED DEVELOPMENT LEVEL FOR PROPERTY LOCATED WITHIN THE PLAT AND DO NOT OPERATE AS A RESTRICTION IN FAVOR OF ANY PROPERTY OWNER INCLUDING AN OWNER OR OWNERS OF PROPERTY WITHIN THIS PLAT WHO TOOK TITLE TO THE PROPERTY WITH REFERENCE TO THIS PLAT.

# SW 12 AVENUE U-HAUL

A PORTION OF BLOCK 10 OF THE AMENDED PLAT OF FAIRVIEW AS RECORDED IN  
PLAT BOOK 10 PAGE 25 BROWARD COUNTY FLORIDA PUBLIC RECORDS  
LYING IN SECTION 2  
TOWNSHIP 49 SOUTH, RANGE 42 EAST

PLAT BOOK \_\_\_\_\_, PAGE \_\_\_\_\_

SHEET 2 OF 2 SHEETS



LEGEND

AP BROWARD COUNTY PROPERTY APPRAISER  
B.C.R. BROWARD COUNTY PUBLIC RECORDS  
CCR CERTIFIED CORNER RECORD  
ID IDENTIFICATION NUMBER  
IR IRON ROD  
INST INSTRUMENT NUMBER  
N/D NAIL AND DISK  
NVAL NON-VEHICULAR ACCESS LINE  
O.R.B. OFFICIAL RECORD BOOK  
P.B. PLAT BOOK  
PG PAGE  
PRM PERMANENT REFERENCE MONUMENT  
R/W RIGHT OF WAY  
T.B.M. TEMPORARY BENCH MARK

SYMBOLS LEGEND

■ PRM PERMANENT REFERENCE MONUMENT

AREA TABULATION TABLE

PARCEL "A"	107,599.71	SQUARE FEET	2.470+/-	ACRES
PARCEL "B"	1,205.63	SQUARE FEET	0.0274+/-	ACRES
PARCEL "C"	9,544.72	SQUARE FEET	0.2194+/-	ACRES

PZ23-12000014 1121A.00 SW 12 AVE-POMPANO U-HAUL PLAT1121A\_U-HAUL\_PLAT NO. 2.dwg, 3/9/2023 9:07:37 AM, DWG To PDF.pc3

DRC

PREPARED BY:

SDA SHAH DROTOS & ASSOCIATES

ENGINEERING SURVEYING PLANNING

3410 N. ANDREWS AVE., EXT  
POMPANO BEACH, FL 33064  
PH: 954-943-9433 FAX: 954-983-7554  
APRIL 14, 2022  
SURVEYOR'S PROJECT NO. 1121A.00

DRC

PZ23-12000014 05/17/2023